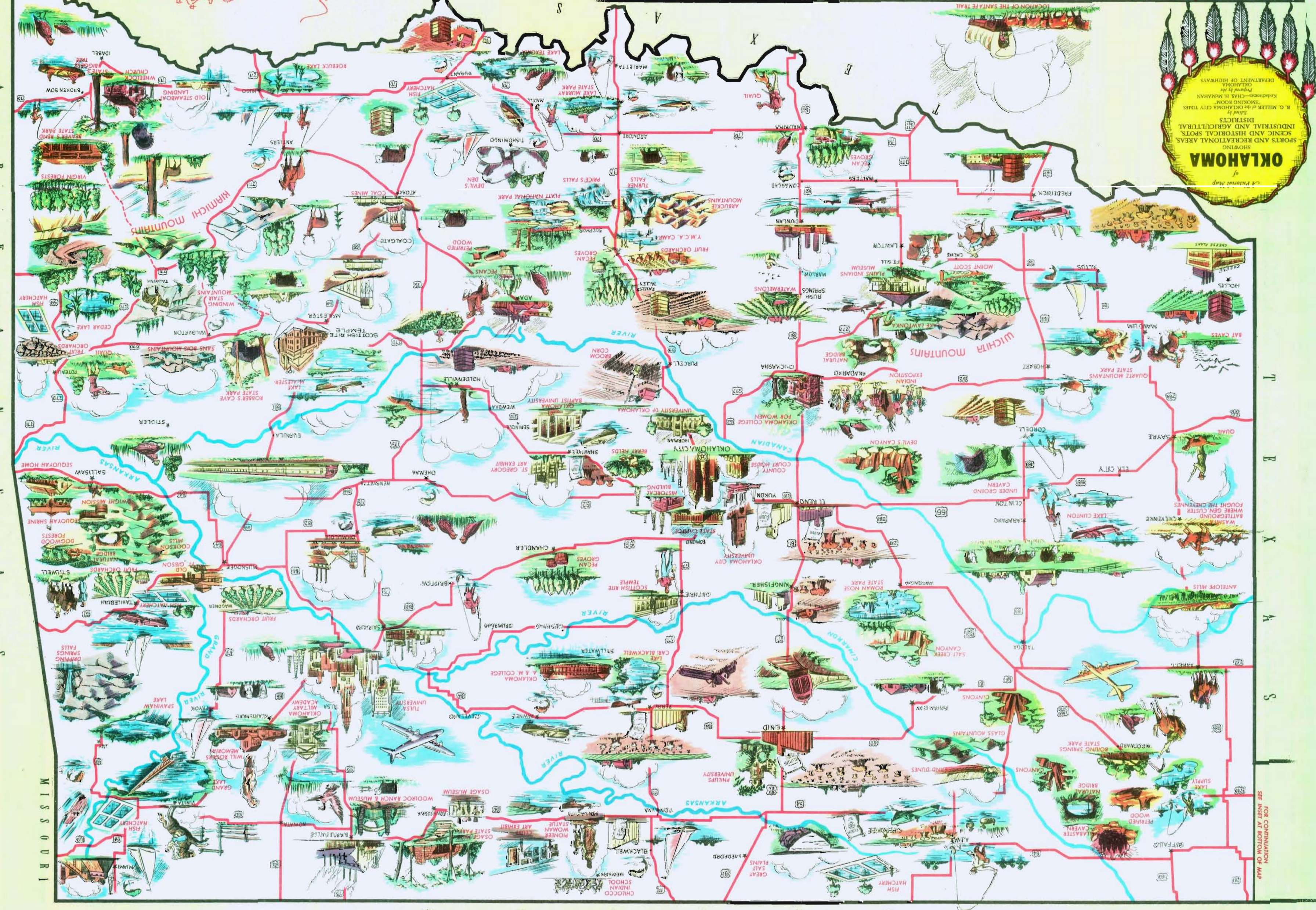




THE HISTORIC RUN INTO OKLAHOMA, APRIL 22, 1889



State Highway 44 in the Grand Mountains north of Tulsa in Jackson County.

Dist. No. 8, Tulsa	29,581
Dist. No. 7, Tulsa	586
Dist. No. 6, Tulsa	143
Dist. No. 5, Tulsa	1,131
Dist. No. 4, Tulsa	103
Dist. No. 3, Tulsa	526
Dist. No. 2, Tulsa	471
Dist. No. 1, Tulsa	216

Information on local conditions may be obtained from the following District Offices:

OKLAHOMA HIGHWAY DEPARTMENT
CAPITAL OFFICE BUILDING
OKLAHOMA CITY, OKLA.
PHONE 5-2171



State Highway 33, Kingfisher Memorial Highway west of Kingfisher in Kingfisher County.

SAFETY AND AN ACCIDENT
DRIVE SAFELY

Have your driver's or chauffeur's license in your immediate possession at all times when operating a motor vehicle. ALWAYS give your undivided attention to the road.

BE ALERT - Watch for changing conditions to overtake and pass. Do not drink or use drugs before driving.

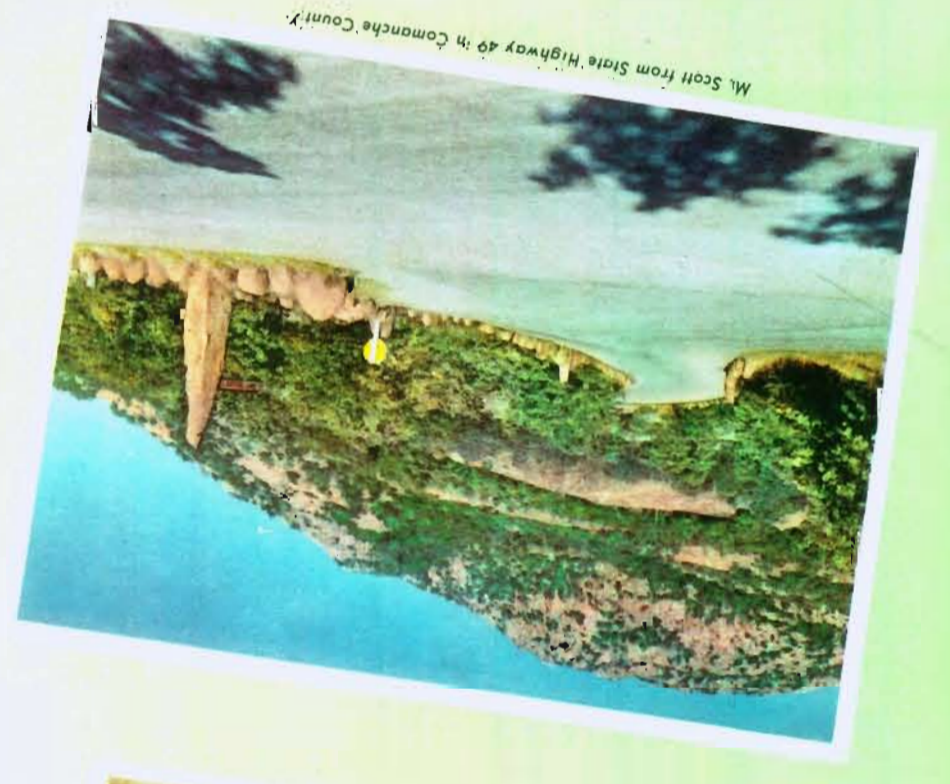
DRIVE SLOWLY IN THE RIGHT HAND LANE AND DO NOT INCREASE SPEED WHEN OTHER VEHICLES ARE OVERTAKING YOU.

DO NOT PASS WHEN THE LIGHTS OF AN ONCOMING VEHICLE ARE DIM. The light of following closely behind another vehicle or stop on highway.

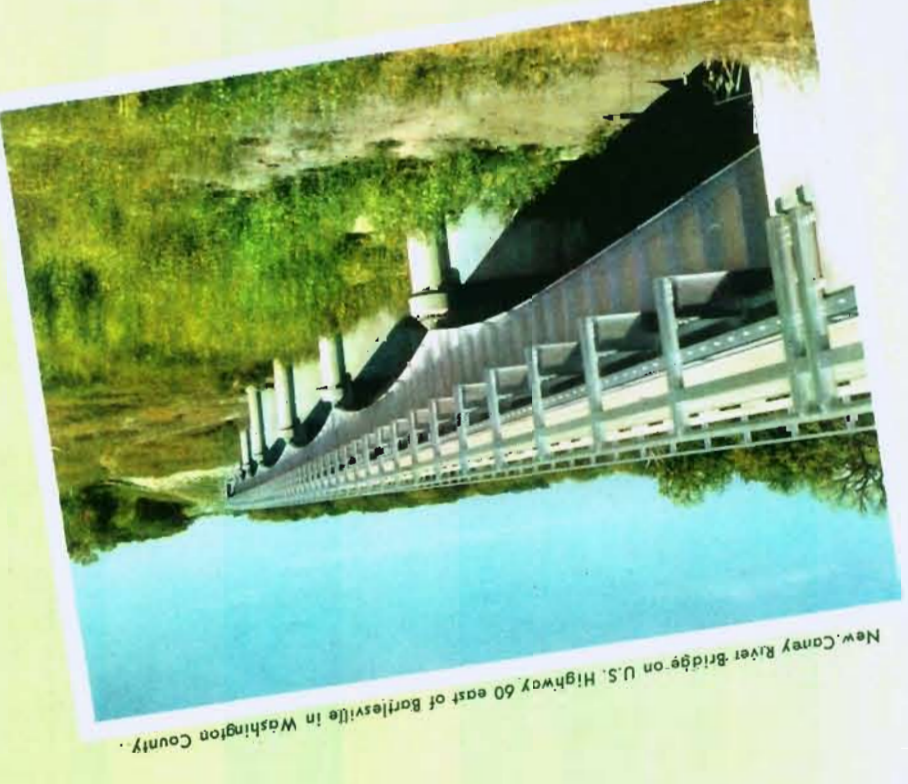
BE CAREFUL - Do not travel portion of highway and NEVER PARK on right of way to overtake and pass.

WATCH FOR AND OBEY ALL STOP SIGNS.

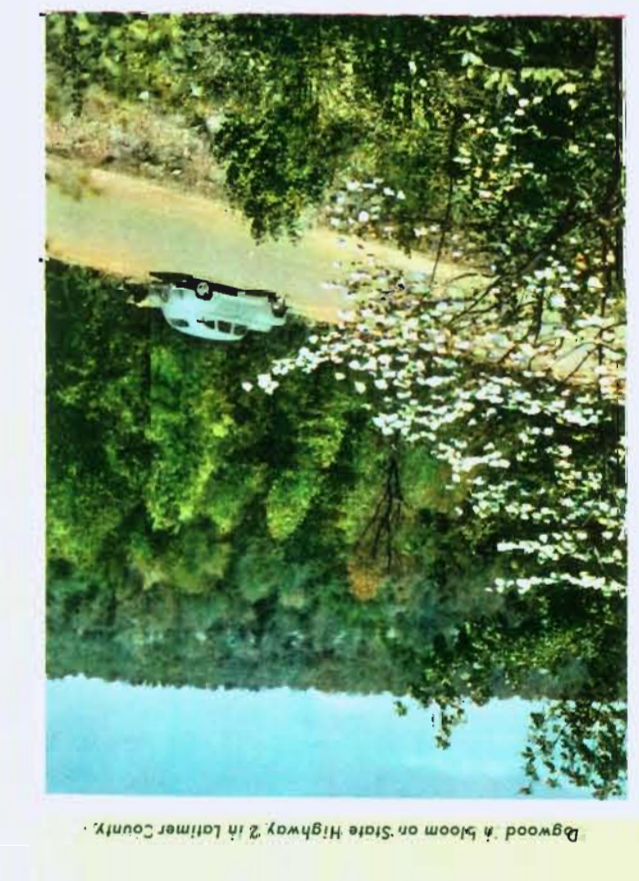
WARNING SIGNS AND TRAFFIC SIGNALS.



State Highway 49 in Comanche County.



New Conroy River Bridge on U.S. Highway 60 east of Bartlesville in Washington County.



Agwood's Span on State Highway 2 in Latimer County.

GENERAL INFORMATION

OKLAHOMA has over 10,100 miles of State and Federal Highways on the State.

Passenger Cars: 65 M.P.H. Highway System, 60 M.P.H. in the future.

Trucks: 55 M.P.H. 2,440 Miles are graded Highways.

Buses: 55 M.P.H. 490 Miles are graded & divided Highways.

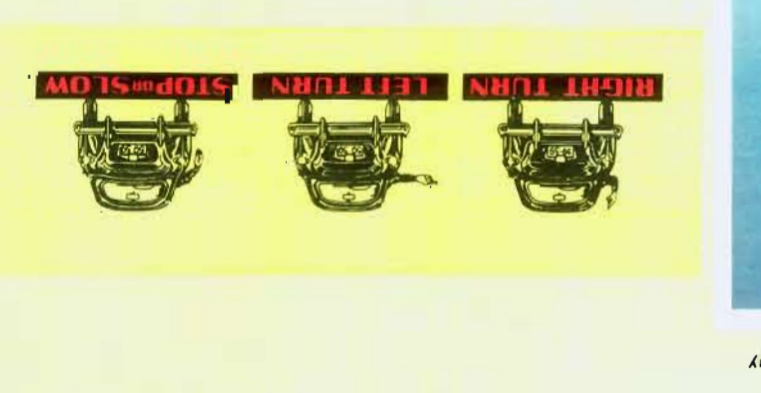
SPEED LIMITS

OKLAHOMA has over 10,100 miles of State and Federal Highways on the State.

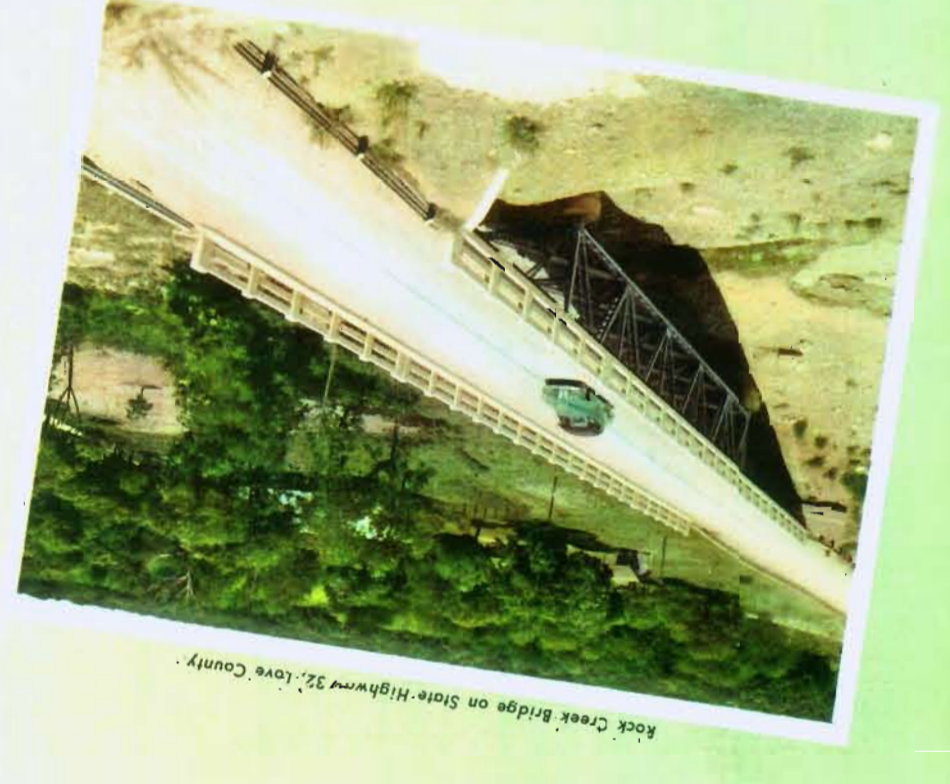
Passenger Cars: 65 M.P.H. Highway System, 60 M.P.H. in the future.

Trucks: 55 M.P.H. 2,440 Miles are graded Highways.

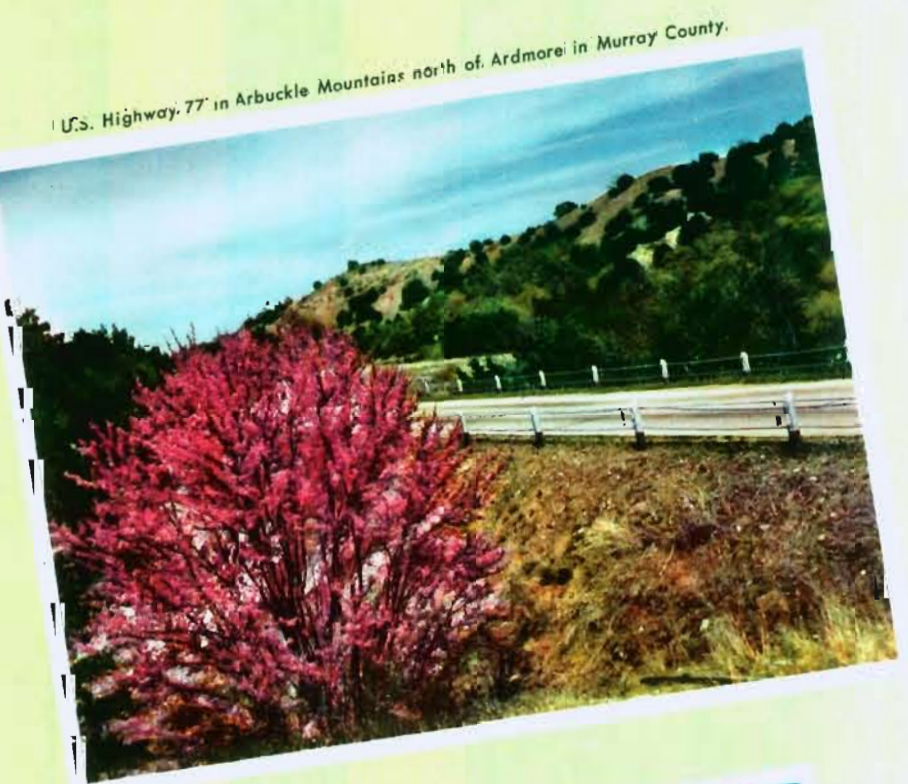
Buses: 55 M.P.H. 490 Miles are graded & divided Highways.



Flores Woman Stone, U.S. Highway 77 in Pecos County, N.M.



Kick Creek Bridge on State Highway 32, Love County.



U.S. Highway 77 in Arbuckle Mountains north of Ardmore in Murray County.



Will Rogers Memorial, U.S. Highway 56 at Ardmore in Rogers, Oklahoma.

Welcome to Oklahoma

Hospitality has long been the distinguishing quality of Oklahoma. We hope you'll take advantage of this visit to mingle with our people and enjoy some of the scenic spots depicted here.

Our rivers and lakes are well stocked with fish which aren't shy of anglers. This is the original Indian Territory and the largest Indian population of any State in the Union.

The romance of black gold still flourishes. A tour of the lead and zinc fields in the Oklahoma cowpokes are real, with boots and the cowboy garb. May an unsung Will Rogers is among them.

You'll find Oklahomans simple, honest, direct. And you'll discover we're glad to help visitors enjoy themselves.

Johnston Murray
Governor



Redwoods on Capital Hill in Oklahoma City.

OKLAHOMA

OKLAHOMA STATE HIGHWAY COMMISSION
JOHNSTON MURRAY, Governor

L. M. TITTLE, Chairman
ROBERT BILES, Vice-Chairman
JOE W. CURTIS, Secretary
ROBERT BARR, Member
PAUL V. CARLIE, Member
C. H. MULLENDORE, Member
JULIUS W. COX, Member
J. L. GOINS, Member
C. A. STOLDT, Director

JOHNSTON MURRAY, Governor

SEPTEMBER 1951

FOR FREE DISTRIBUTION ONLY



State Highway 12 north of Mill Creek in Johnston County.



Barron Park River Bridge on State Highway 3 in the Cherokee County.

Facts about OKLAHOMA

OKLAHOMA WAS OPENED TO HOMESTEADERS BY ACT OF CONGRESS FEBRUARY 22, 1889

CHEROKEE STRIP RUN SETTLED APRIL 22, 1889

OKLAHOMA BECAME A STATE IN 1907

STATE TREE: MULLENDORE REDBUD

STATE BIRD: SCISSOUR

APFA 69283